

Merrychef **conneX**[®] 12 & 16 - Daily oven cleaning

IMPORTANT:



A daily cleaning routine will ensure that you comply with the required hygiene standards, as well as help maintain the efficiency of your Merrychef oven.

It is very important to cool down the oven before cleaning.



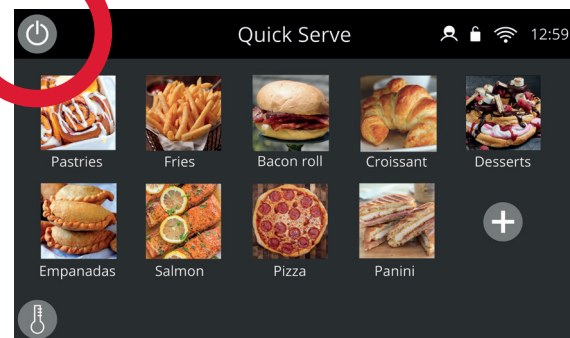
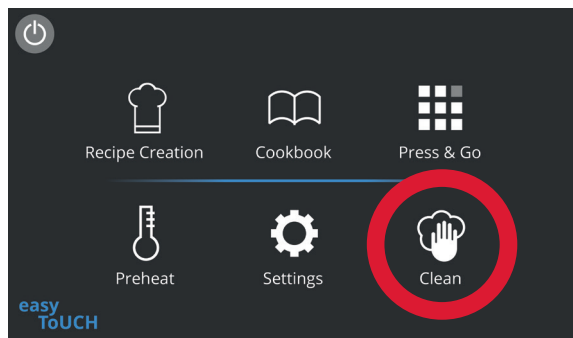
You will need

- Merrychef[®] Oven Cleaner
- Merrychef[®] Oven Protector
- Protective rubber gloves
- Soft bristle brush
- Non-abrasive nylon scrub pad
- Cleaning towel and cloths
- Eye protection
- Heat proof gloves (optional)
- Dust mask (optional)



conneX 12

conneX 16



In 'Full Serve Mode' select the cleaning icon from the home page.

In all other modes select the power button to disable heating and start the cooling cycle.

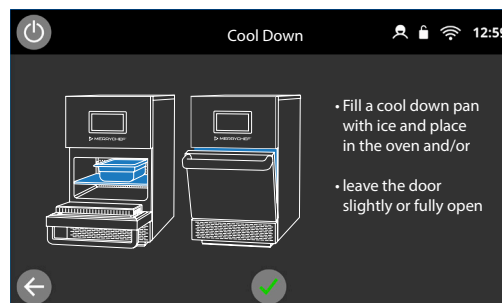
You will be taken through a series of pictorial instructions on the oven, as shown below. Selecting the green tick at the bottom of the screen progresses you through the cleaning sequence.

Customise cleaning settings

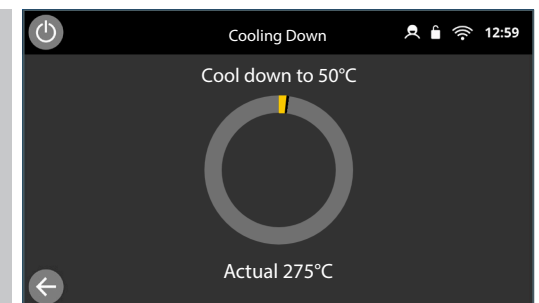
In settings under 'Cleaning' you have the option to disable:

- Using a cool down pan
- Adding protector
- Including the operator sign off screen

Cool down the oven

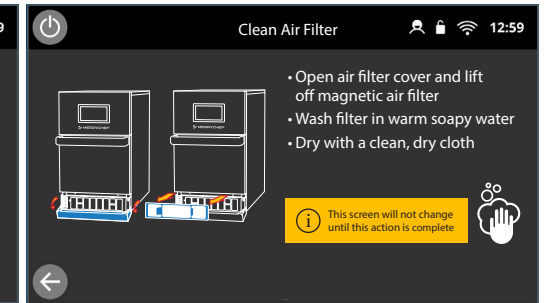
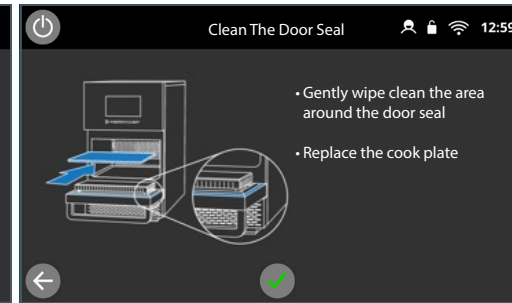
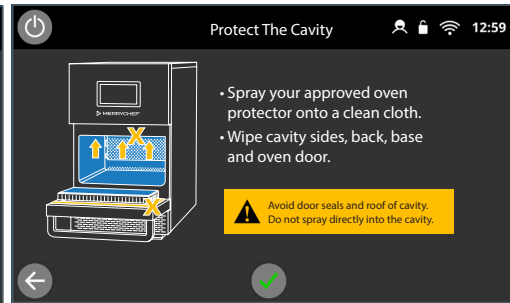
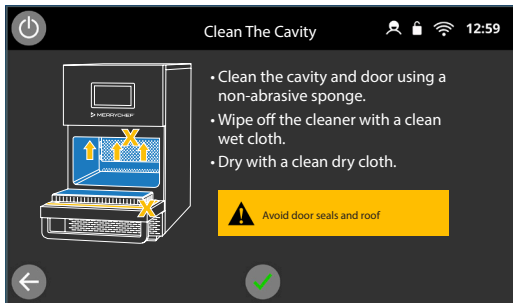
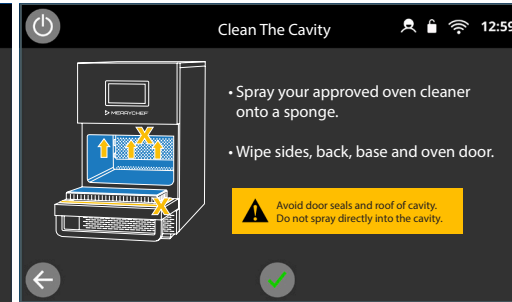
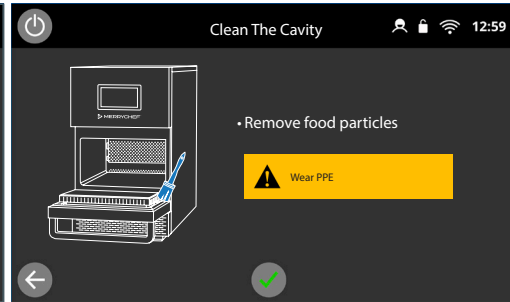
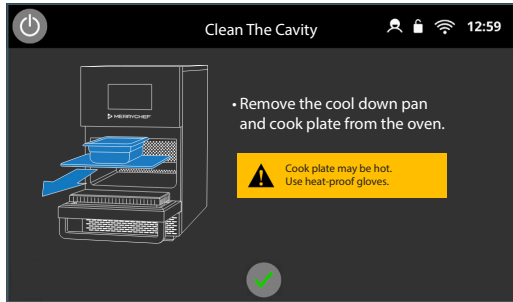


Note: This may just indicate a door open close down process, if ice cool down is disabled in settings.



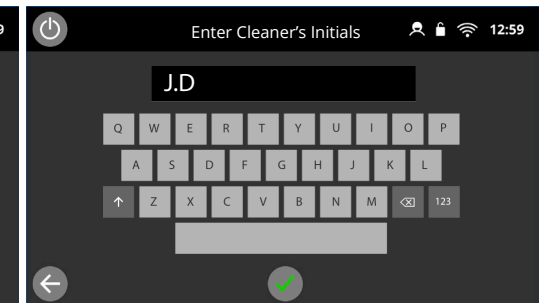
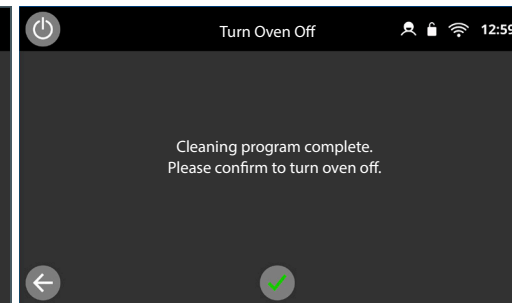
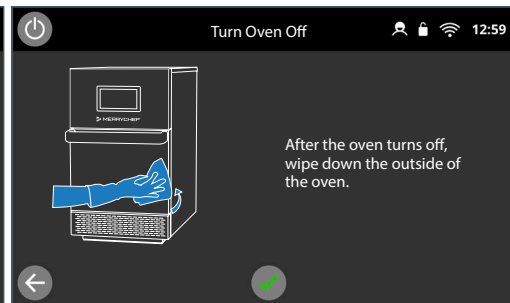
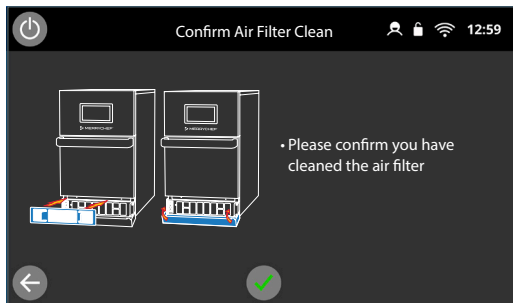
The cool down timing progress is displayed and takes approximately 20 mins.

Clean the cold oven

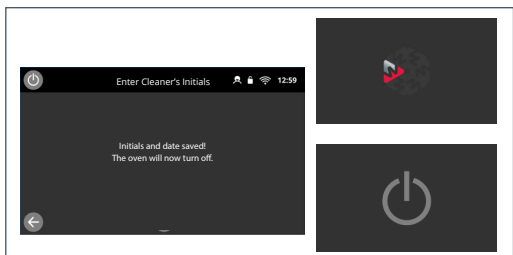


Note: Apply protector will not appear if 'Use of protector' is disabled in settings.


Note: This screen will not allow progress until the air filter has been removed and replaced.



Note: This will not appear if 'Cleaning sign off' is disabled in settings.



The oven will power down and return to the power button screen once complete.

WARNING: 

A daily cleaning routine will ensure that you comply with the required hygiene standards, as well as help maintain the efficiency of your Merrychef oven. **It is very important to cool down the oven before cleaning.**



For more information please visit www.merrychef.com/videos